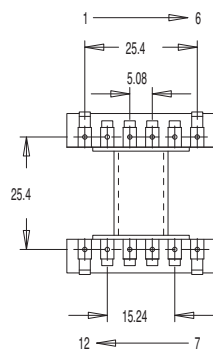
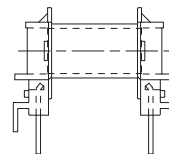
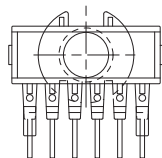
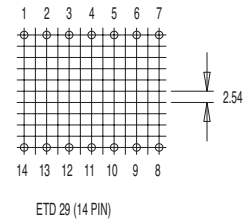
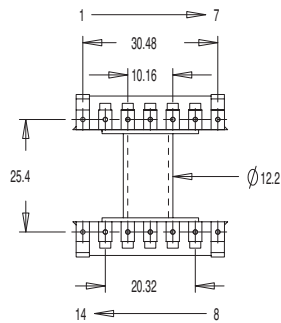
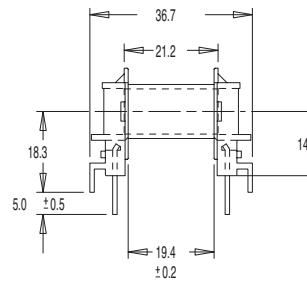
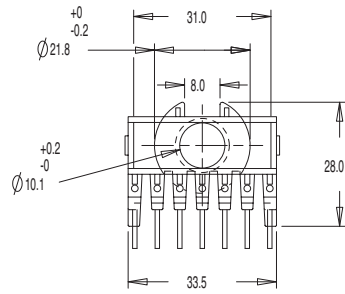
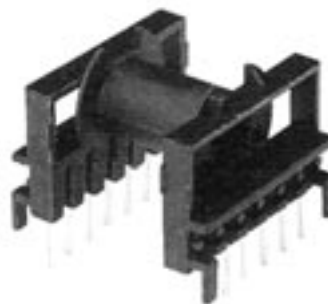
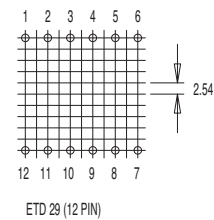




## ETD 29 HORIZONTAL



Other dimensions as above



Bobbin size	No. of pins	Pin size	Part No.
ETD 29/16/10	12 (2 x 6)	Ø1.0 or 0.8 sq.	FD6980
ETD 29/16/10	14 (2 x 7)	Ø1.0 or 0.8 sq.	FD6990

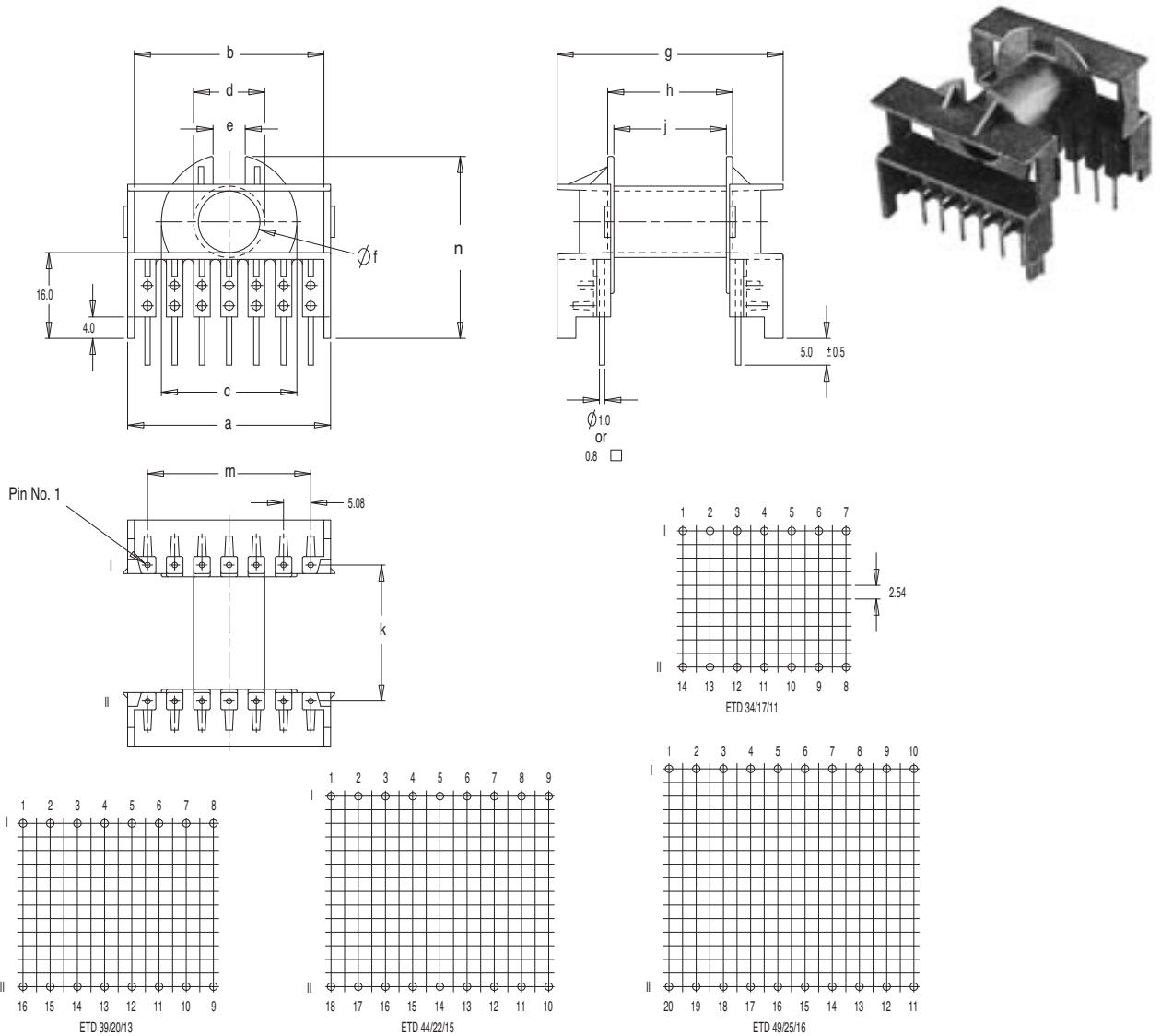
Standard materials: Polyester (PET) to UL94V0 Pin material: Phosphor Bronze Dimensions in millimetres

Miles-Platts terminals & wire are now being converted to lead-free - please refer to technical sales for details





ETD HORIZONTAL

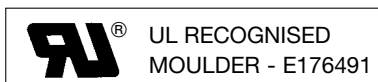


Section 5

Bobbin size	No. of pins available	Pin size	a	b	c	d	e	f	g	h	j	k	m	n	Part No.
ETD 34/17/11	14 (2 x 7)	Ø1.0mm or 0.8 Sq.	37.9	35.4	25.3	13.3	6.0	11.5	42.2	23.3	21.0	25.4	30.48	34.0	FD7000
ETD 39/20/13	16 (2 x 8)	Ø1.0mm or 0.8 Sq.	42.9	40.3	29.0	15.0	7.5	13.1	47.6	28.1	25.8	30.48	35.56	36.6	FD7010
ETD 44/22/15	18 (2 x 9)	Ø1.0mm or 0.8 Sq.	48.0	45.4	32.2	17.4	9.0	15.6	52.3	31.9	29.6	35.56	40.64	39.3	FD7020
ETD 49/25/16	20 (2 x 10)	Ø1.0mm or 0.8 Sq.	52.9	50.2	35.8	18.9	10.0	17.1	57.0	35.1	32.8	40.64	45.72	41.7	FD7030
ETD 54	24 (2 x 12)	Ø1.0mm or 0.8 Sq.	61.0	56.3	39.5	22.0	12.0	19.8	61.0	39.3	36.8	45.7	55.88	42.0	FD7040
ETD 59	24 (2 x 12)	Ø1.0mm or 0.8 Sq.	66.5	61.7	42.9	24.8	11.0	22.5	66.0	43.7	41.2	50.8	60.96	48.1	FD7050

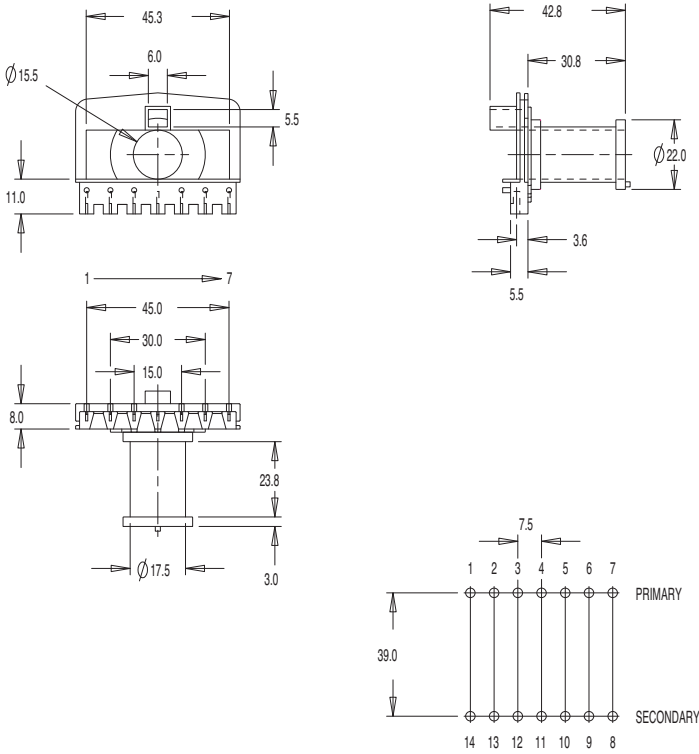
Standard materials: Polyester (PET) to UL94V0 Pin material: Phosphor Bronze Dimensions in millimetres

For further technical information please contact sales@milesplatts.co.uk or www.milesplatts.co.uk





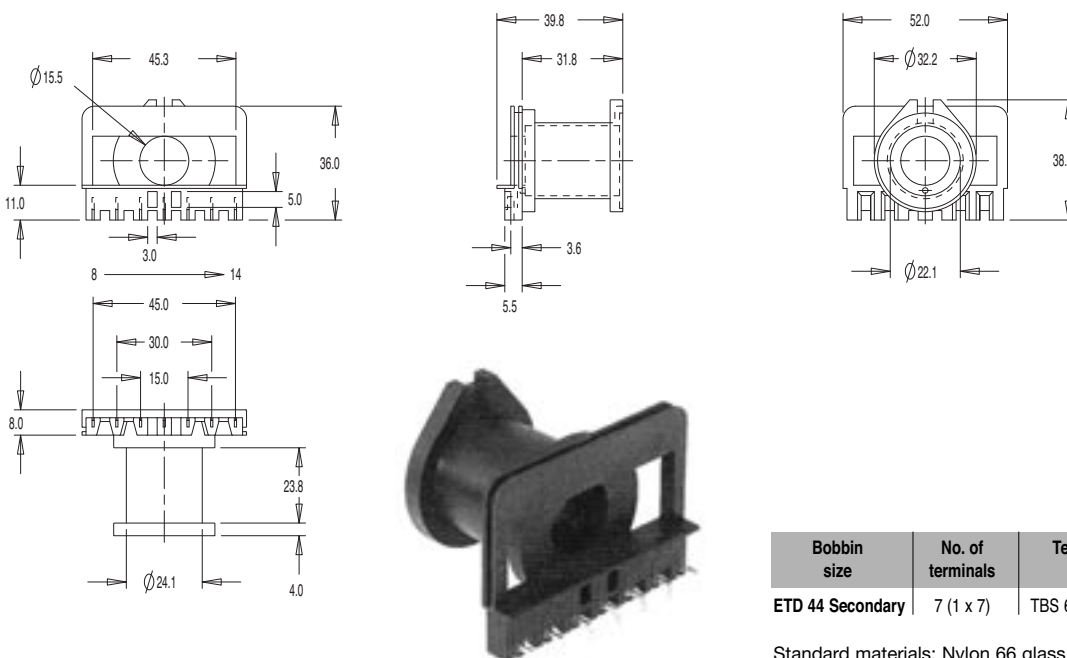
ETD 44 PRIMARY



Bobbin size	No. of terminals	Terminal type	Part No.
ETD 44 Primary	7 (1 x 7)	TBS 600 Series	FD7025

Standard materials: Nylon 66 glass reinforced to UL94V0  
Dimensions in millimetres

ETD 44 SECONDARY

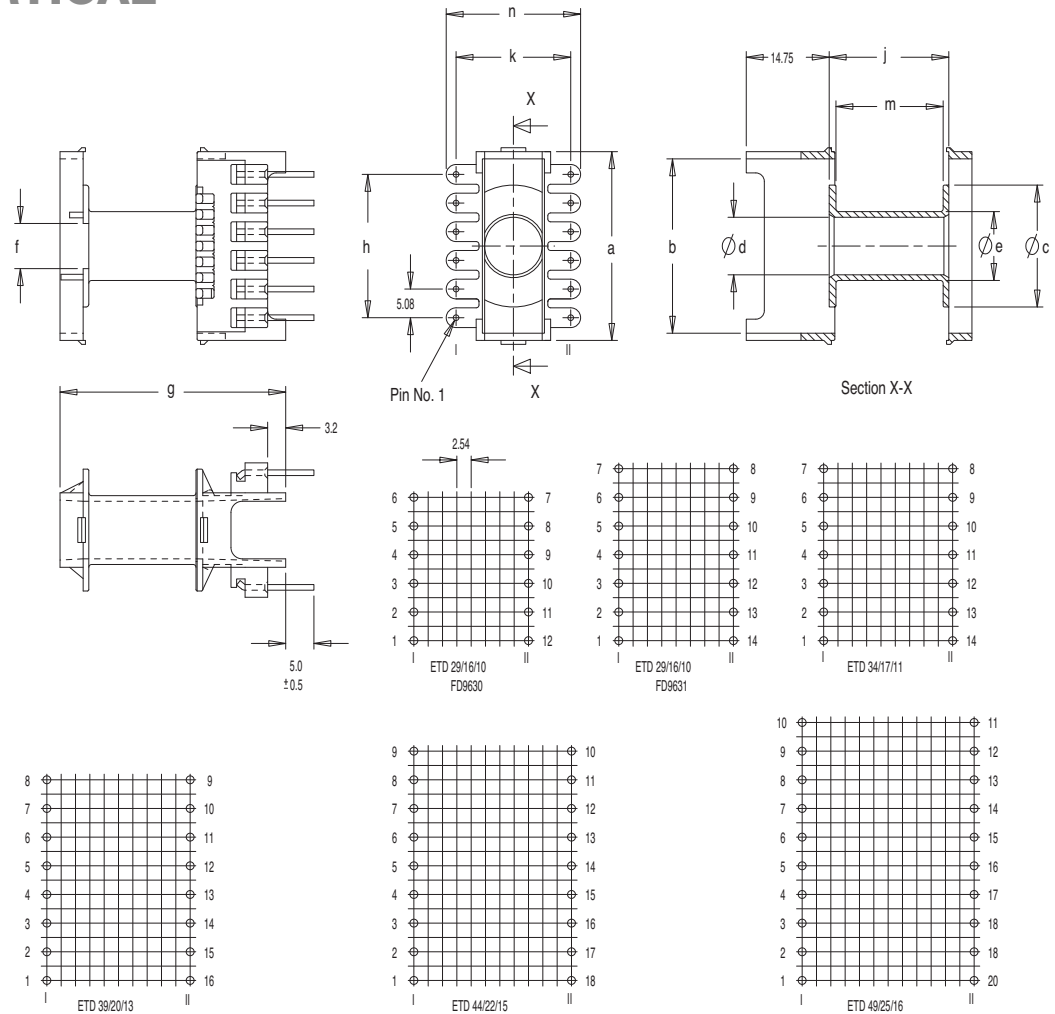


Bobbin size	No. of terminals	Terminal type	Part No.
ETD 44 Secondary	7 (1 x 7)	TBS 600 Series	FD7026

Standard materials: Nylon 66 glass reinforced to UL94V0  
Dimensions in millimetres



ETD VERTICAL



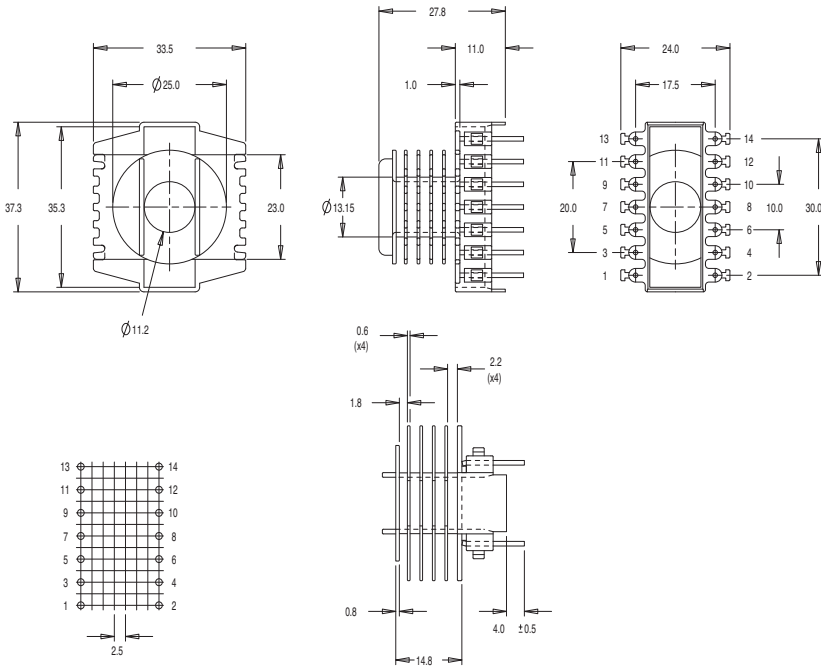
Bobbin size	No. of pins available	Pin size	a	b	c	d	e	f	g	h	j	k	m	n	Part No.
ETD 29/16/10	12 (2 x 6)	Ø1.0mm or 0.8 Sq.	33.4	30.9	21.6	10.2	12.2	8.0	40.0	25.40	21.2	20.32	19.0	23.7	FD9630
ETD 29/16/10	14 (2 x 7)	Ø1.0mm or 0.8 Sq.	33.4	30.9	21.6	10.2	12.2	8.0	40.0	30.48	21.2	20.32	19.0	23.7	FD9631
ETD 34/17/11	14 (2 x 7)	Ø1.0mm or 0.8 Sq.	37.9	35.4	25.3	11.5	13.5	8.0	42.6	30.48	23.3	22.86	21.0	26.4	FD9640
ETD 39/20/13	16 (2 x 8)	Ø1.0mm or 0.8 Sq.	42.8	40.3	29.0	13.1	15.3	9.0	47.3	35.56	28.1	25.40	25.8	29.0	FD9650
ETD 44/22/15	18 (2 x 9)	Ø1.0mm or 0.8 Sq.	48.0	45.5	32.2	15.6	17.8	10.0	51.7	40.64	31.9	27.94	29.6	32.2	FD9660
ETD 49/25/16	20 (2 x 10)	Ø1.0mm or 0.8 Sq.	52.8	50.2	35.8	17.1	19.3	11.0	55.7	45.72	35.2	30.48	32.8	35.8	FD9670

Standard materials: Polyester (PET) to UL94V0 Pin material: Phosphor Bronze Dimensions in millimetres

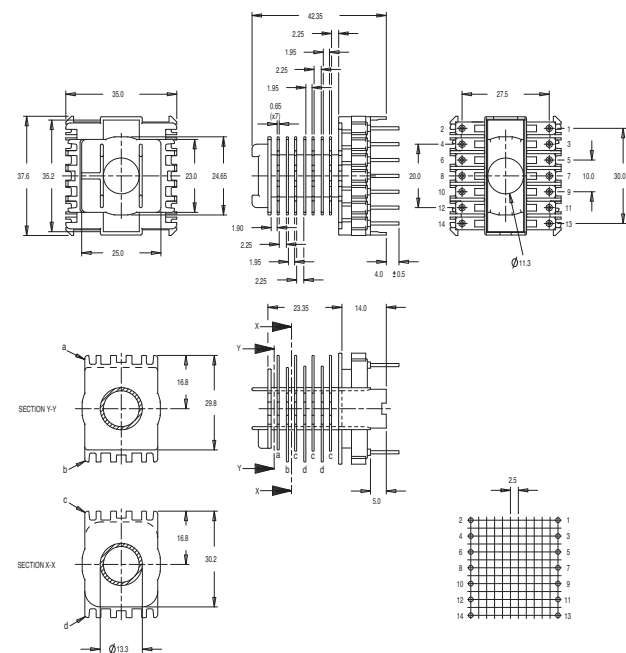
Most products are available direct from stock with same day despatch  
- please contact sales for details



ETD 34 VERTICAL (5 Chamber)



ETD 34 VERTICAL (8 Chamber)

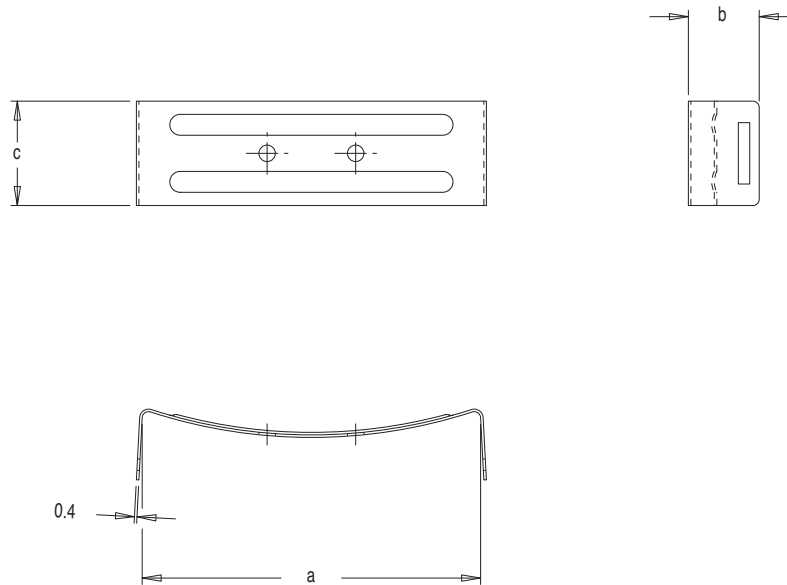


Bobbin size	No. of pins available	Pin size	Part No.
ETD 34 (5 Chamber)	14 (2 x 7)	$\varnothing 1.0$	FD9645
ETD 34 (8 Chamber)	14 (2 x 7)	$\varnothing 1.0$	FD9648

Standard materials: Nylon 66 glass reinforced to UL94V0  
 Pin material: Phosphor Bronze  
 Dimensions in millimetres



## CLIPS FOR ETD FERRITES



Bobbin size	a	b	c	Part No.
ETD 29	33.8	8.9	8.8	TCL29
ETD 34	38.0	9.5	11.1	TCL34
ETD 39	43.7	10.0	12.6	TCL39
ETD 44	48.2	11.1	15.0	TCL44
ETD 49	53.5	11.0	16.5	TCL49
ETD 54	60.0	11.7	19.3	TCL54
ETD 59	65.4	12.9	22.1	TCL59

Materials: Stainless steel Dimensions in millimetres